



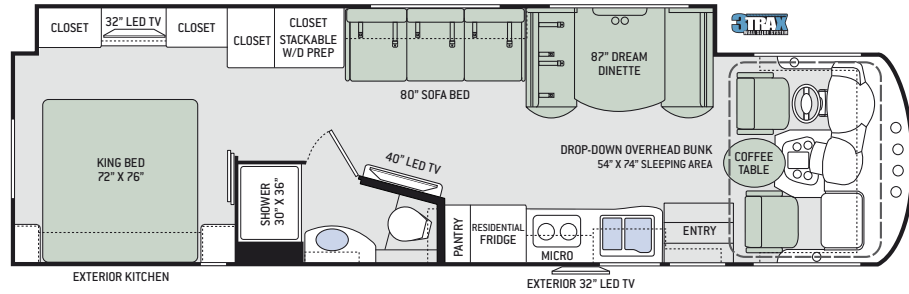
MIRAMAR[®]

BY THOR MOTOR COACH

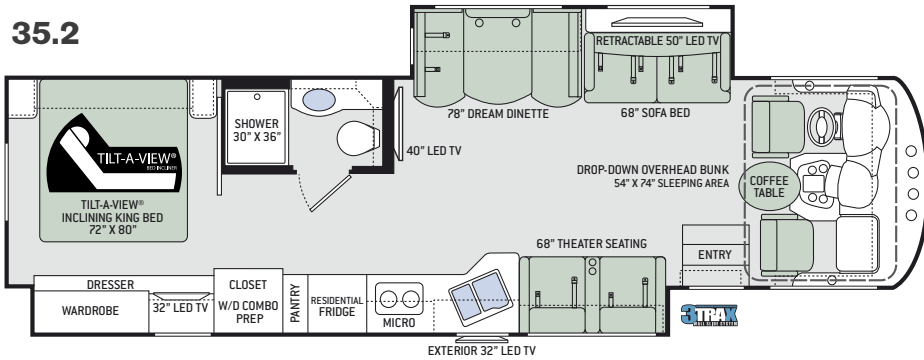
Life is all about balance, and the Miramar strikes the perfect combination of luxury, functionality and style.

Floor Plans

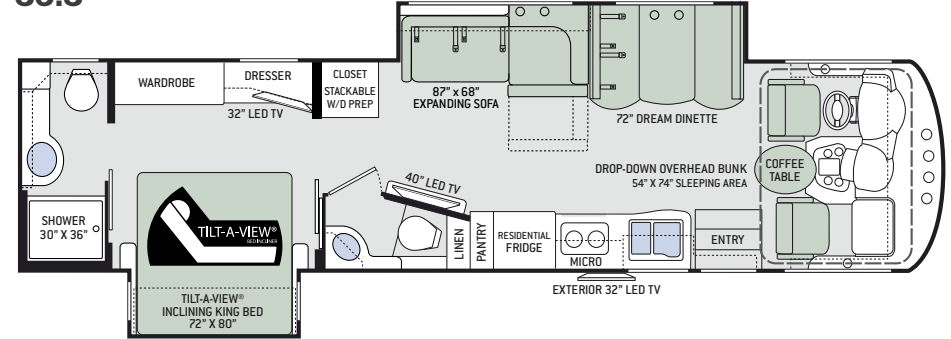
34.2



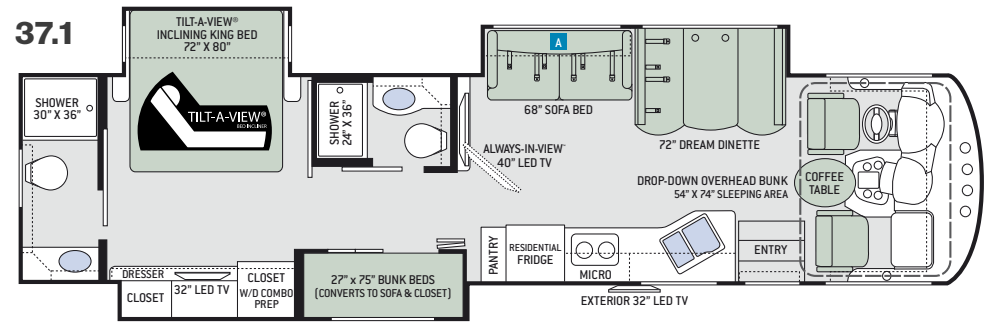
35.2



35.3



37.1

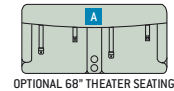


Specifications

| | 34.2 | 35.2 | 35.3 | 37.1 |
|-------------------------------------|------------|-------------|---------|---------|
| Chassis | Ford | Ford | Ford | Ford |
| Gross Vehicle (GVWR) | 22,000 | 22,000 | 22,000 | 24,000 |
| Gross Combined (GCWR) | 26,000 | 26,000 | 26,000 | 30,000 |
| Wheel Base | 242" | 242" | 242" | 262" |
| Exterior Length (w/out ladder) | 35'-10" | 36'-10" | 36'-10" | 38'-9" |
| Exterior Height (w/AC) | 12'-11" | 12'-11" | 12'-11" | 12'-11" |
| Exterior Width (w/out mirrors) | 101" | 101" | 101" | 101" |
| Interior Height | 84" | 84" | 84" | 84" |
| Awning Size | 20' | 20' & 3'-8" | 20' | 15' |
| Fuel (gal) | 80 | 80 | 80 | 80 |
| LPG (lbs) | 105 | 105 | 105 | 105 |
| Fresh Water (gal) | 100 | 100 | 100 | 100 |
| Waste Water (gal) | 40 | 40 | 40F-40R | 40F-40R |
| Gray Water (gal) | 43 | 40F-30R | 40F-40R | 40F-40R |
| Water Heater (gal) | 6 | 6 | 6 | 10 |
| Furnace (BTUs) | 35,000 | 35,000 | 35,000 | 35,000 |
| Exterior Storage Capacity (cu. ft.) | 145 / 178* | 180 | 190 | 216 |

*Without Exterior Kitchen

OPTION



3TRAX™ is our in-wall slideout system, housing all the moving and mechanical parts within the sidewall of the motorhome. This triple track design supports large rooms, like those found in full-wall slideouts, ensuring simple, reliable, maintenance-free operation. What sets 3TRAX™ apart is the patented rail system, in-floor roller guides and electric motor design. For more information, visit thormotorcoach.com/3TRAX.

Interior Decor



BAMBOO FROST



FALCON CREST



RIP TIDE



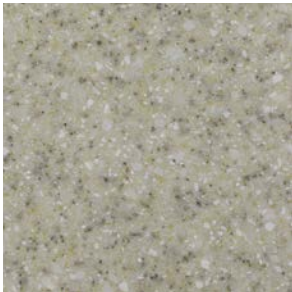
HIGH-GLOSS GLAZED MILAN



HIGH-GLOSS GLAZED NEWPORT



HIGH-GLOSS GLAZED PACIFIC



KITCHEN COUNTERTOP



BED & BATH COUNTERTOP



RESIDENTIAL VINYL FLOORING

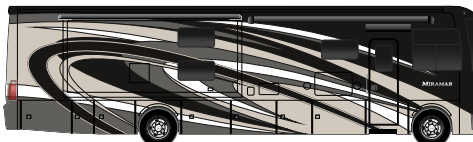
Exterior Graphics



AUTUMN SPICE PARTIAL PAINT



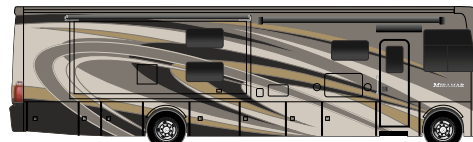
TAILWIND PARTIAL PAINT



CRYSTAL SPRINGS FULL-BODY PAINT



LACQUER RED FULL-BODY PAINT



SUN VALLEY FULL-BODY PAINT

Features

CONSTRUCTION & EXTERIOR

- Ford® F-53 Chassis - 6.8L Triton® V10 Engine, 320HP, 460 lb.-ft. Torque - TorqShift® 6-Speed Automatic with Overdrive Transmission
- Welded Tubular Steel Floor
- Welded Tubular Aluminum Roof & Sidewall Cage Construction
- Vacu-Bond Laminated Roof, Wall & Floor with Block Foam Insulation
- Premium One-Piece TPO Roof
- One-Piece Fiberglass Front & Rear Caps
- HD-MAX® Exterior with Partial Paint & Graphics Package
- Automatic Leveling Jacks with Touchpad Controls
- Power Patio Awning with Integrated LED Lighting
- Power Entry Door Awning (35.2)
- Slideout Room Topper Awnings
- 3TRAX® Wall Slide System (34.2 & 35.2)
- Basement Pass-Through Storage
- Rotocast Storage Compartments
- Side-Hinged Aluminum Compartment Doors
- Pet-Link™ Multi-Purpose Tie-Down
- Roof Ladder
- Electric Entry Steps
- Frameless Windows
- 8,000-lb. Trailer Hitch with 7-pin Round Connector

CONSTRUCTION & EXTERIOR OPTIONS

- Full-Body Paint with Gel Coated Sidewalls
- Frameless Dual Pane Windows

AUTOMOTIVE & COCKPIT

- 10" Touchscreen Dash Radio with Bluetooth®
- Back-Up Monitor
- Heated/Remote Exterior Mirrors with Integrated Side View Cameras
- Reclining/Swivel Leatherette Captain's Chairs with Stow-Away Coffee Table
- Power Adjustable Driver's Seat
- Emergency Engine Start Switch
- Power Roller Shade on Windshield
- Manual Roller Shades on Side Windows
- 22.5" Tires with Aluminum Wheels
- Valve Stem Extenders on Rear Wheels
- Dash Workstation with 110-volt & 12-volt Outlets
- Power Drop-Down Hide-Away Overhead Bunk with Cotton Cloud™ Mattress & Bunk Ladder

IMPORTANT—PLEASE READ: This brochure reflects product design, fabrication, material, components and specifications at the date of printing, which date is disclosed below. **Please visit us online at ThorMotorCoach.com or consult with your selling dealership for the latest in standards, options, specification and technical information.** Photographs in the brochure may depict optional equipment or may only be available in certain floor plans. Components, appliances and the chassis may have been manufactured in a calendar year before the vehicle's designated model year. All capacities are approximate. The actual length of the vehicle may differ from that indicated in the brochure due to variances in the manufacturing processes and/or installed components. All dry weights are based on standard model features and do not include optional features or equipment. Component part and appliance manufacturers issue limited warranties covering portions of the vehicle not covered under the limited warranty we issue. Copyright Thor Motor Coach, Inc. © MY 04/15/17

INTERIOR

- Rubber Tread Entry Steps with Lighted Step Well
- Residential Vinyl Flooring
- 84" Interior Ceiling Height
- Soft Vinyl Ceiling
- LED Lighting
- Ceiling Ducted Air Conditioning System
- High-Gloss Glazed Cabinetry with Solid Wood Raised Panel Cabinet Doors & Nickel Finish Hardware
- Full Extension Metal Ball-Bearing Metal Drawer Guides
- Leatherette Dream Dinette® Booth
- Leatherette Inclining Theater Seating with Footrests (35.2)
- Leatherette Sofa Bed (34.2, 35.2 & 37.1)
- Leatherette Expanding Sofa Bed (35.3)
- Lambrequin Window Treatments
- Window Privacy Roller Shades

INTERIOR OPTIONS

- Leatherette Inclining Theater Seating with Footrests (37.1)
- Electric Fireplace w/Remote Control (34.2, 35.3 & 37.1)

KITCHEN

- 11 cu. ft. Residential Refrigerator with Ice Maker
- 2-Burner Electric Induction Cooktop
- 30" Over-the-Range Convection Microwave Oven
- Solid Surface Sink Covers & Kitchen Countertops
- Under-Mount Double Bowl Sink
- Pantry
- 12-volt Attic Fan with Cover

BEDROOM & BATHROOM

- Denver Mattress® King Size Bed (34.2)
- Denver Mattress® King Size Bed with Tilt-A-View™ Inclining Bed Mechanism (35.2, 35.3 & 37.1)
- Designer Headboard, Bedspread & Pillow Shams
- Bunk Beds – Converts to Sofa or Closet (37.1)
- Foot Flush Porcelain Toilet
- Power Vent in Bathroom
- Stainless Steel Bathroom Sink
- Skylight in Shower
- Shower with Glass Door

ENTERTAINMENT

- Retractable 50" LED TV in Living Area (35.2)
- 40" LED TV in Living Area
- Blu-Ray Player in Living Area
- 32" LED TV in Bedroom
- 15.5" & 24" LED TVs & DVD Player in Bunk Beds (37.1)
- Bluetooth® Coach Radio System in Bedroom with Exterior Speakers
- Power Charging Center for Electronics
- Cable TV & HDMI Ready
- Digital TV Antenna
- Exterior 32" LED TV
- Exterior Kitchen w/2.6 cu. ft. Refrigerator & Sink (34.2)

ENTERTAINMENT OPTION

- Storage Area with Shelf IPO of Exterior Kitchen (34.2)

ELECTRICAL & PLUMBING

- Onan® RV QG 5500 Gas Generator
- 50-amp Shoreline Power Cord
- Automatic Generator Start
- 1800-watt Inverter
- Dual Auxiliary House Batteries with Battery Tray that Holds up to Four (4) Batteries
- Multiplex Wiring Control System
- Pre-wired for Solar Charging
- Battery Disconnect Switch
- Dual 13,500 BTU Roof Air Conditioners
- Exterior LP Connection
- 6-gallon DSI Gas/Electric Water Heater (34.2, 35.2 & 35.3)
- 10-gallon DSI Gas/Electric Water Heater (37.1)
- Water Heater Bypass System
- Enclosed & Heated Holding Tanks
- Black Tank Flush System
- Stackable Washer/Dryer Prep (34.2 & 35.3)
- Washer/Dryer Combo Prep (35.2 & 37.1)
- Outside Shower
- Systems Control Center

YOUR LOCAL THOR MOTOR COACH DEALER



Made to fit.

thormotorcoach.com/miramar

P.O. Box 1486, Elkhart, IN 46515

Sales Department: 800.860.5658

Customer Service: 877.855.2867

